

# Grow your business with.....

## Promotional Space & Retail Merchandising Units

Our promotional space provides business with the opportunity to promote in a prime location with high footfall.

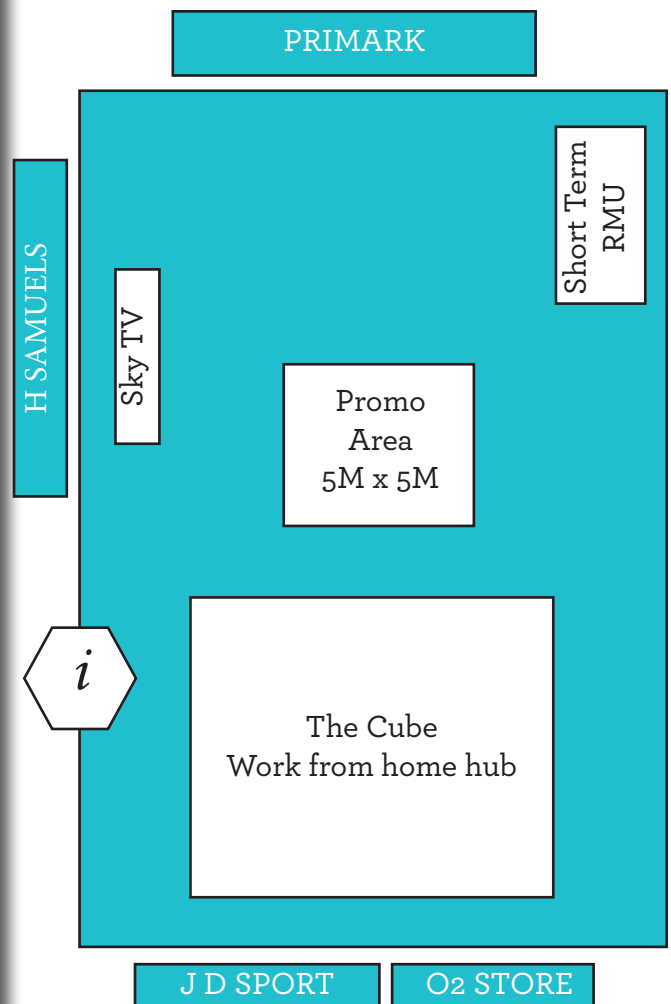
Our promotional area, Central Square, is in the middle of the shopping centre.

Nearby retailers include: Primark, H Samuels, JD Sport, Jack Wills, Sainsbury's and New Look.

High footfall location.  
Flexible short term license agreement.

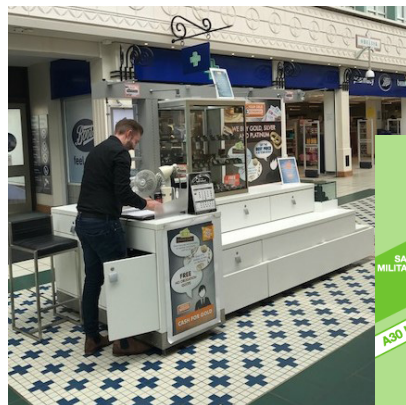
Long Term Retail Merchandising Units are located outside Boots in Obelisk Way.

A short term Retail Merchandising Unit is located outside Primark in The Square.



- Over 100 retailers ranging from independents to department stores.
- 44,454 square metres (478,500 square feet) of retail space.
- Population catchment of 1,019,409
- Average weekly footfall is 140,000 - 180,000 (pre Covid-19).
- 1,025 parking spaces with 23 spaces for parent and child parking and 35 disabled parking bays.

Car Park is operated by Surrey Heath Borough Council



## Demographics

(Shoppers visiting the centre)

### Mosaic Profiles

Affluent Achievers	34%
Rising Prosperity	21%
Comfortable Communities	23%

### Age

18-24 years	17%
25-34 years	19%
35-44 years	13%
45-54 years	22%
55-64 years	9%

### Gender

Male	39%
Female	61%

## PRICES FOR PROMOTIONAL SPACE - The Square ENQUIRIES

5M x 5M                      £1000.00 per week plus VAT

### PRICES FOR LONG TERM RETAIL MERCHANDISING UNITS - Obelisk Way

January - August            £400.00 per week plus VAT  
 September - December    £600.00 per week plus VAT

### PRICES FOR SHORT TERM RETAIL MERCHANDISING UNITS - The Square

January - August            £600.00 per week plus VAT  
 September - October        £700.00 per week plus VAT  
 November - December     £800.00 per week plus VAT

Administration Manager  
 The Square Camberley  
 5-6 The Square  
 Camberley  
 Surrey GU15 3SL  
 Tel: 01276 404110  
 Email: [glenis.grosssmith@thesquarecamberley.co.uk](mailto:glenis.grosssmith@thesquarecamberley.co.uk)